

**COMODO**  
Creating Trust Online®



# Comodo TrustConnect

Software Version 1.72

## User Guide

Guide Version 1.72.111114

Comodo Security Solutions  
1255 Broad Street  
Clifton, NJ 07013

## Table of Contents

Comodo TrustConnect - Overview.....	3
1.How To Set Up TrustConnect On Windows.....	3
2.How To Set Up TrustConnect On Linux.....	15
3.How To Set Up TrustConnect On MAC OS.....	17
4.How To Set Up TrustConnect On iPhone, iPad, iPod Touch.....	17
5.How To Set Up TrustConnect On Android Devices.....	19
6.How to Set Up TrustConnect On Windows Mobile Devices.....	27
Comodo TrustConnect - FAQ.....	36
About Comodo.....	43

# Comodo TrustConnect - Overview

Comodo TrustConnect is a secure Internet proxy service that creates an SSL encrypted session when users are accessing the Internet over public wireless connections. TrustConnect will encrypt all traffic destined for the Internet (including Web site addresses, instant messaging conversations, personal information, plain text user-names, passwords and other important information.) Data thieves and hackers cannot 'sniff' or intercept your data if you connect your laptop to TrustConnect while using a coffee shop wireless connection. They can't even determine where your information is coming from because, as you are connecting to the Internet through a SSL secured VPN connection to the TrustConnect servers, your requests appear to come from our IP address.

## Set Up and Connection

To start using TrustConnect you must first download and install the appropriate TrustConnect client software for your operating system. Client software and configuration guides for supported operating systems are available for download in the TrustConnect area of your account. Alternatively, use the following links:

### Windows

[How to set up TrustConnect on Windows](#)

### MAC OS X

[How to set up TrustConnect on MAC OS](#)

### Linux / OpenVPN

[How to set up TrustConnect on Linux](#)

### iPhone / iPod Touch / iPad

[How to set up TrustConnect on iPhone, iPad, iPod Touch](#)

### Android Devices

[How to set up TrustConnect on Android Devices](#)

### Windows Mobile Devices

[How to set up TrustConnect on Windows Mobile Devices](#)

### FAQ

[Comodo TrustConnect FAQ](#)

## 1. How To Set Up TrustConnect On Windows

TrustConnect is designed to eliminate many types of data hijacks by preventing criminals from attacking or scanning your system from the local network that you are using to connect to the Internet. It also encrypts all of your traffic destined for the Internet (including Web site addresses, instant messaging conversations, personal information, plain text usernames and passwords and other important information).

How to install and set up the Comodo TrustConnect, you can see in the next section:

- [Download and Install the TrustConnect Windows Client](#)
- [Establish a connection to TrustConnect](#)
- [TrustConnect System Configuration](#)

### Download and Install the TrustConnect Windows Client

To connect to the TrustConnect service you must first download and install the TrustConnect Windows client software:

- Firstly, log into your Comodo Account at <https://accounts.comodo.com/> with the user name and password that you created during the TrustConnect or CIS Pro enrollment process.
- Click the 'TrustConnect' tab on the top navigation bar.
- Click 'Download TrustConnect for Windows':

**C·O·M·O·D·O**  
Creating Trust Online™

TrustConnect UserTrust Hop Surf My Account Help Contacts Logout

Logged in successfully

## Comodo TrustConnect

<b>Service Login</b>	Your_User_Name
<b>Service Password</b>	Your_Password
<b>Date from</b>	2009-01-05 20:11:12
<b>Date to</b>	2010-01-05 20:11:12

**Traffic**

**Limit:** Unlimited

**Today**  
No data found.

**This month**

10 — In — Out  
9  
8

Change Service Password

First Time Users – Click Here (view in .pdf format)

Windows Instructions (view in .pdf format)

Linux Instructions (view in .pdf format)

Mac OS X Instructions (view in .pdf format)

iPod Instructions (view in .pdf format)

TrustConnect F.A.Q. (view in .pdf format)

**Download TrustConnect for Windows™**

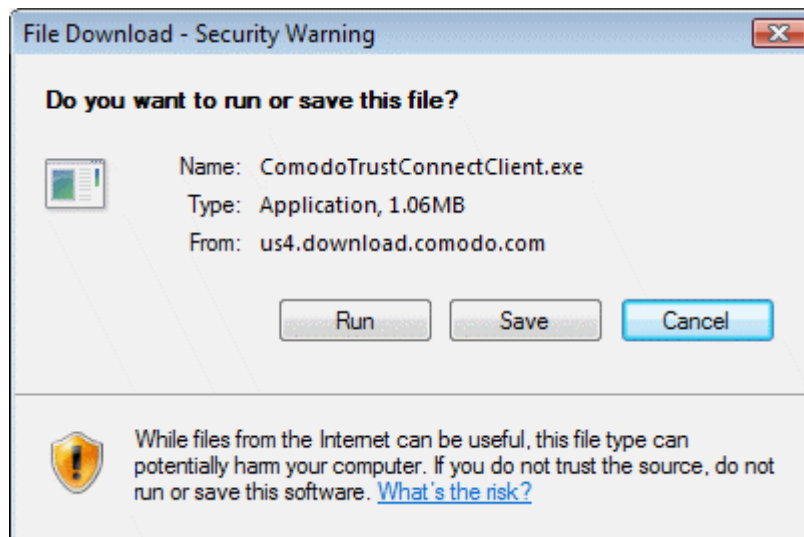
Alternatively, the TrustConnect Windows client can be downloaded direct from the following URL:

<https://accounts.comodo.com/download/trustconnect/ComodoTrustConnectClient.exe>

After downloading the TrustConnect Windows setup file to your local hard drive, double click on ComodoTrustConnect.msi to start the installation wizard.

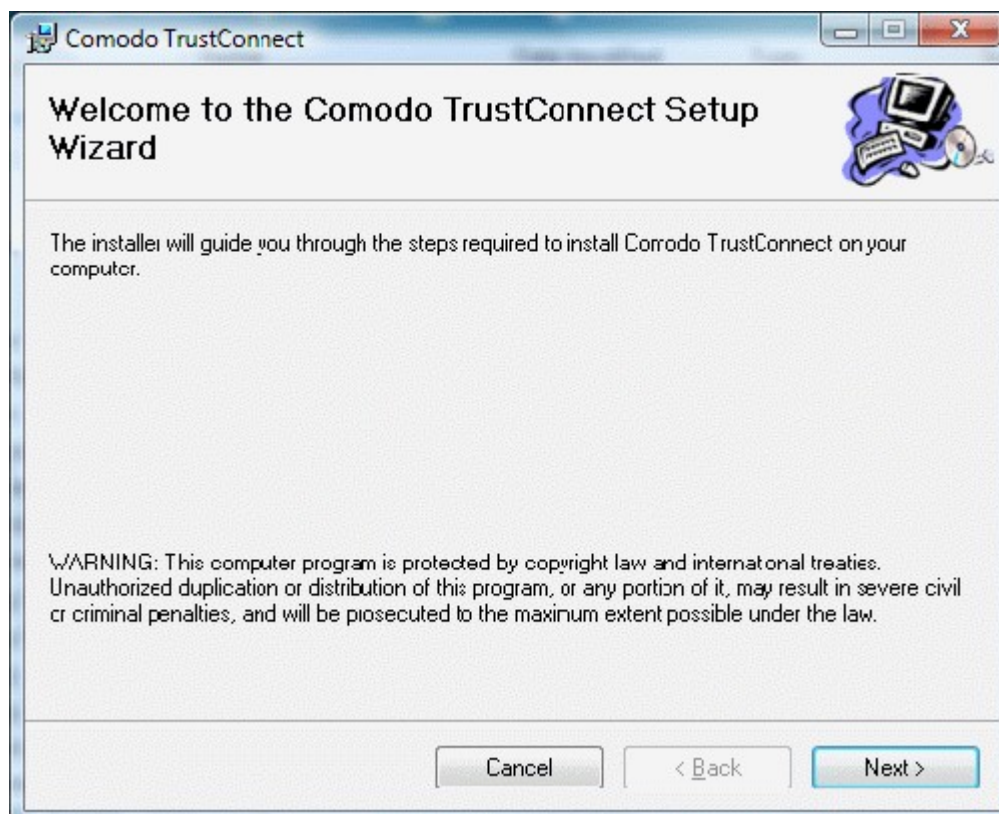
### Step1: Click 'Run'

Simply click 'Run' at the file download dialog to launch the installer.



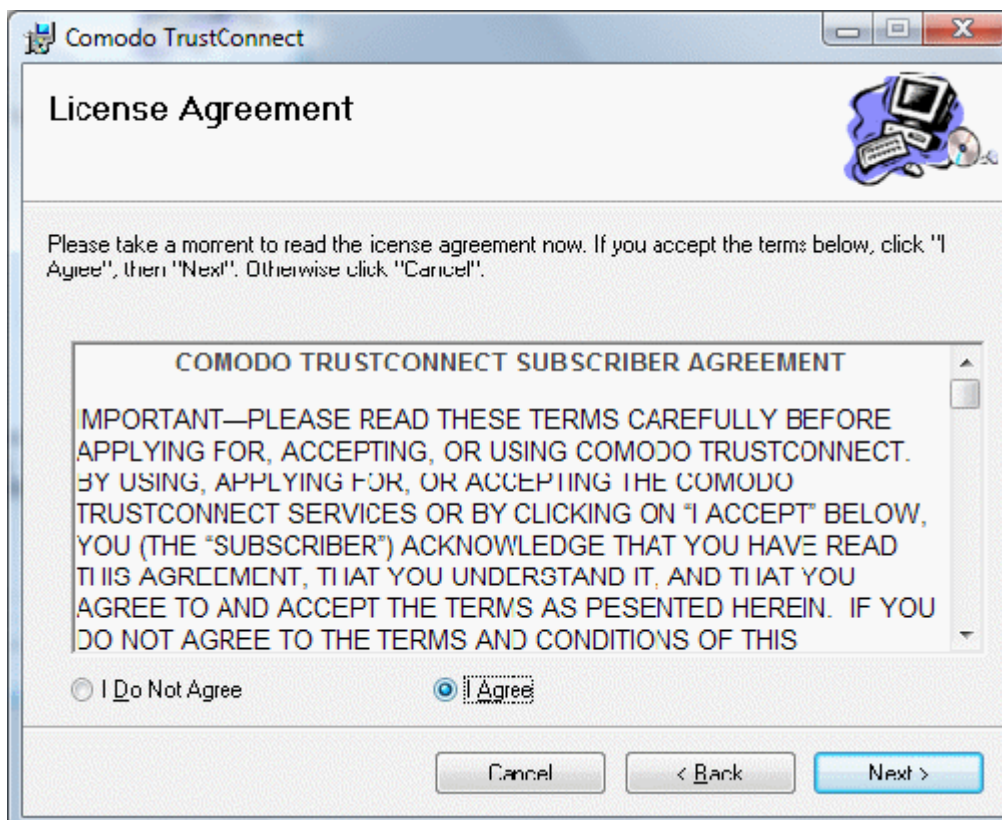
## Step 2: Welcome dialog

Simply click 'Next'.



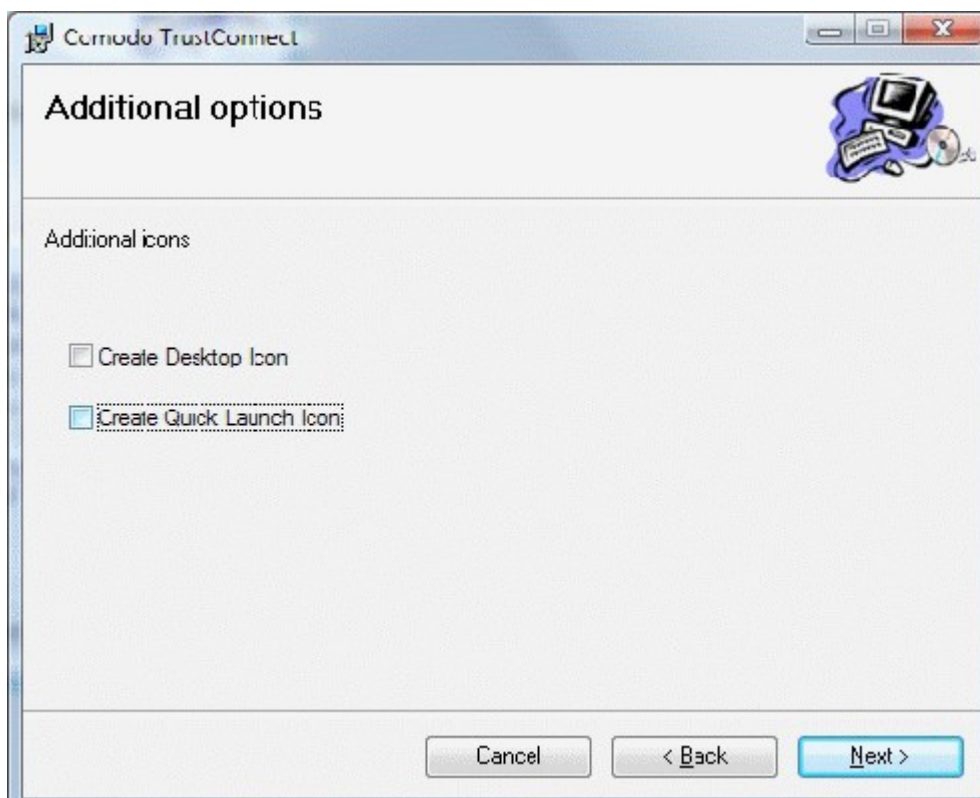
## Step 3: End User License Agreement

The End-User License Agreement dialog box will be displayed.



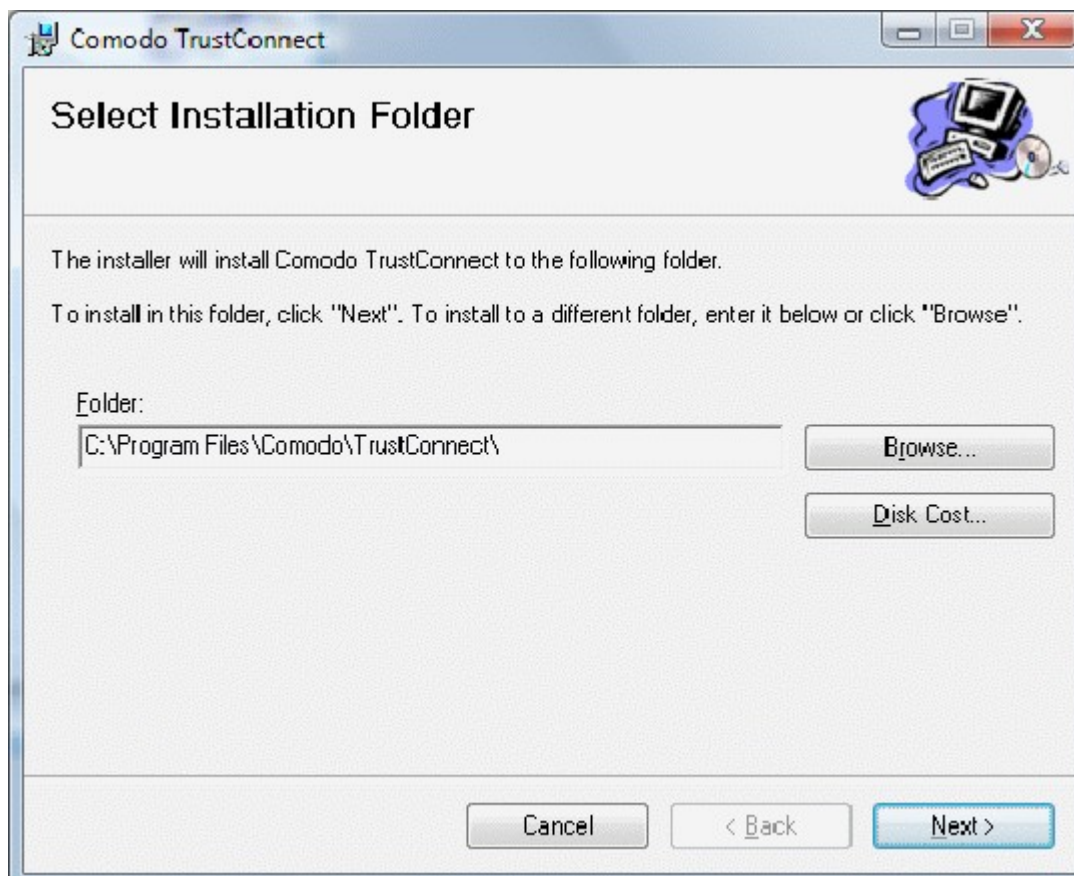
To continue with the installation, you must read and then accept the End User License Agreement (EULA). Click 'I accept' to continue the installation. If you want to cancel the installation at this stage, click 'Cancel'.

#### Step 4: Select the additional options to install



## Step 5: Select Installation Folder

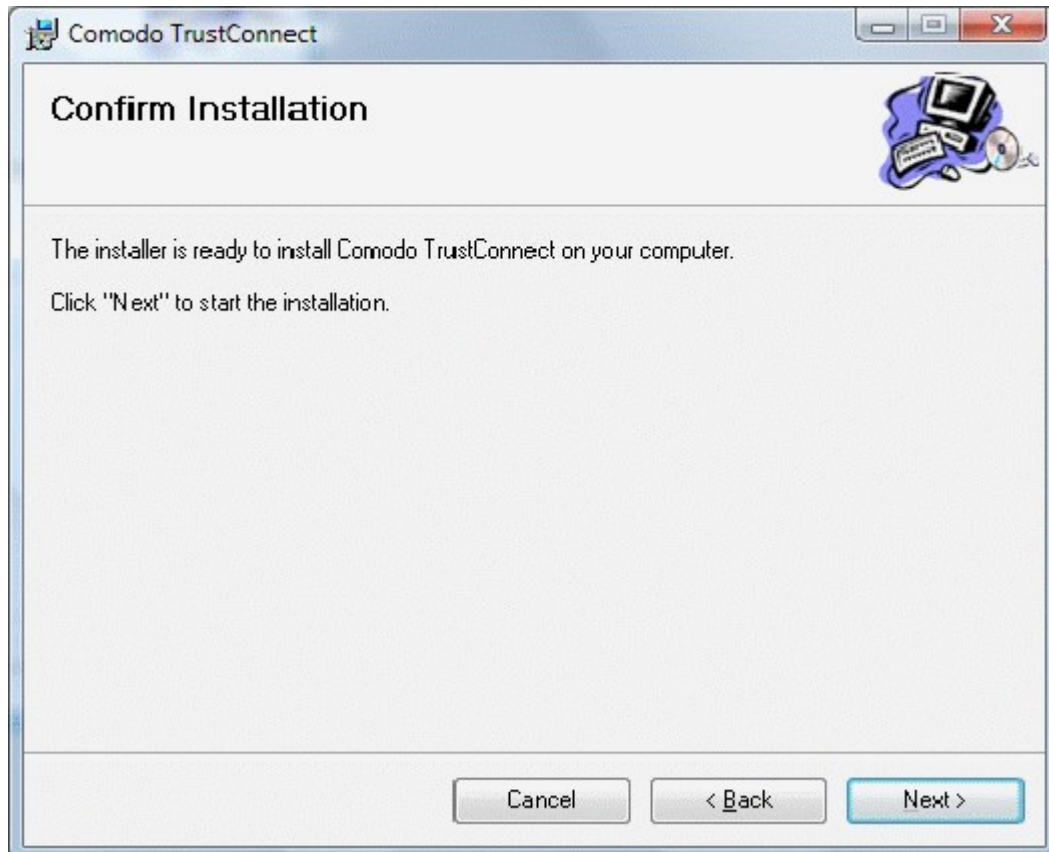
The next screen allows you to select the folder in your hard drive for installing Comodo TrustConnect. The default path is C:\Program Files\Comodo\TrustConnect.



To install the application in the default location, click 'Next'. If you want to install the application in a location other than the default location, click 'Change' to choose a different location.

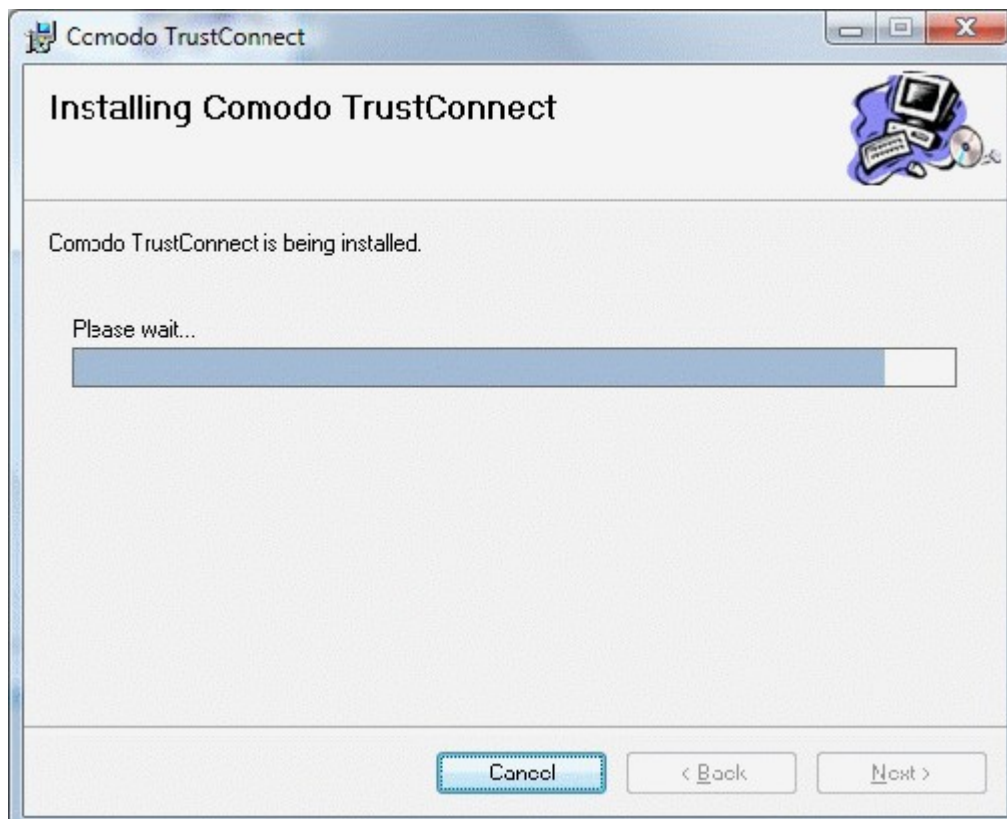
## Step 6: Confirm Installation window

After completing the additional options to your satisfaction the setup wizard will ask for confirmation before commencing the installation procedure.



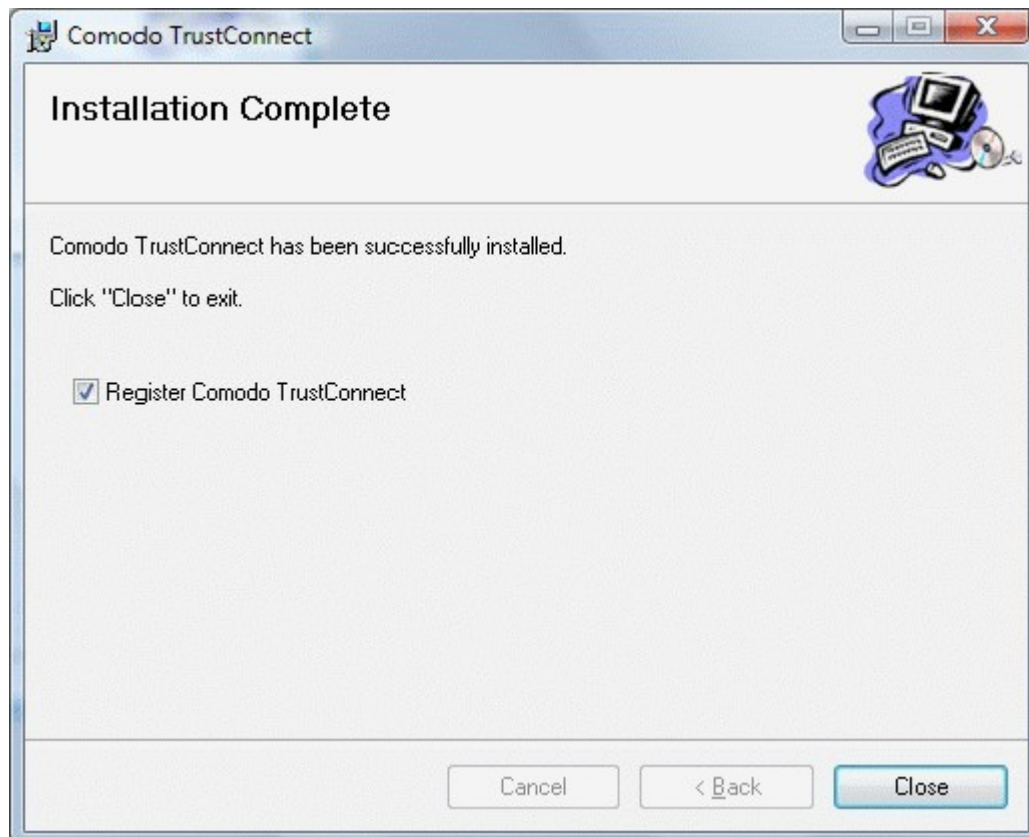
## Step 7: Installation Progress

The installation progress will be indicated...





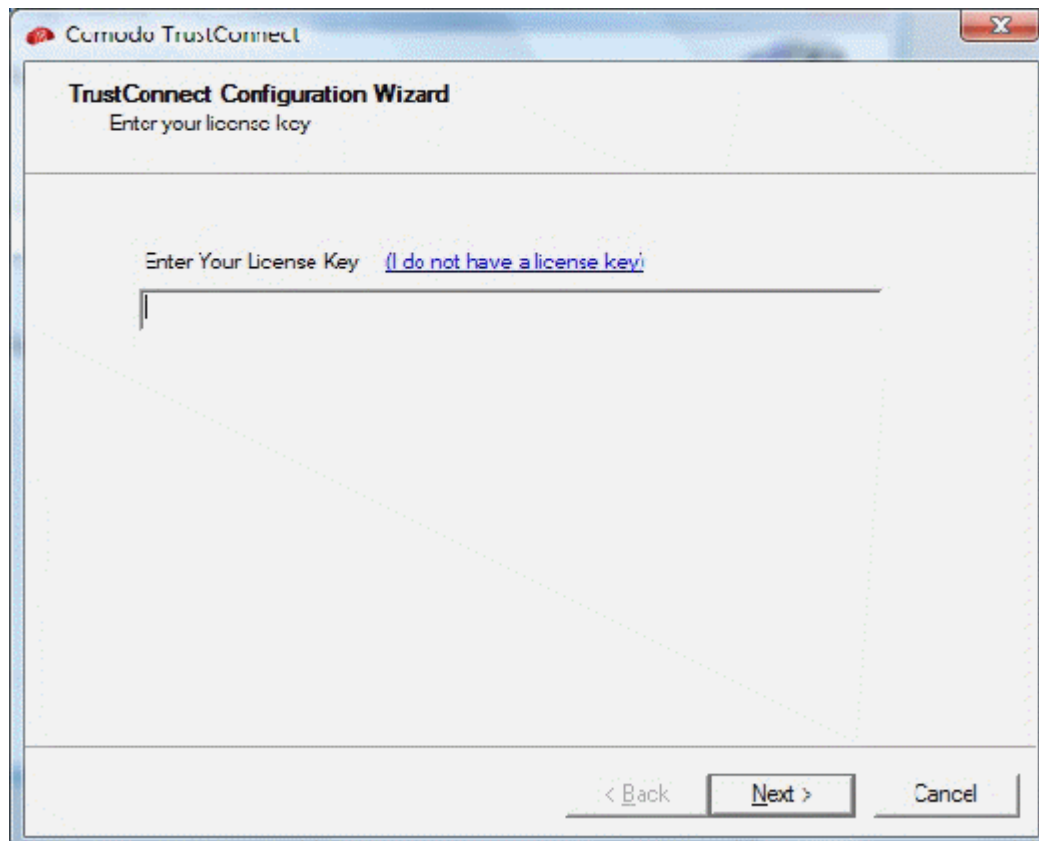
... and on completion, the finish dialogue will be displayed.



Click 'Close'.

## **Step 8: License key window**

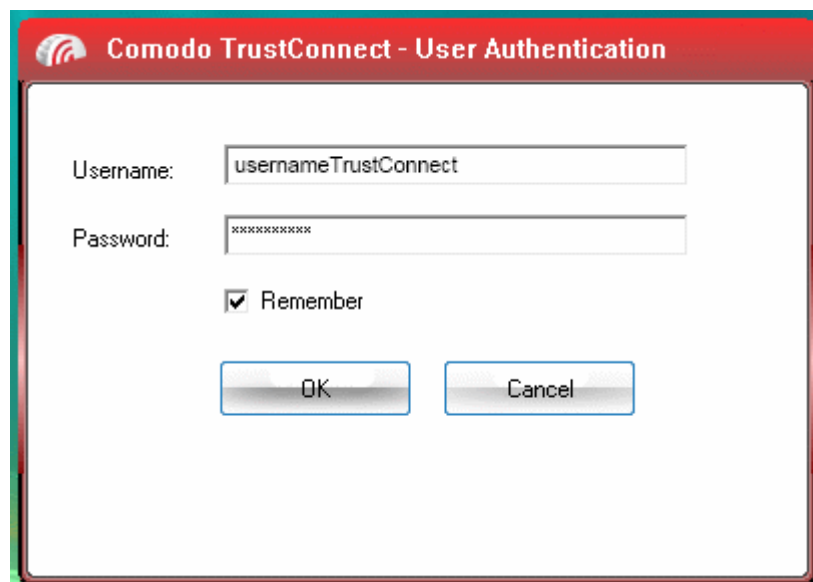
Enter your serial number if you have one, otherwise click the link 'I Do Not Have a License Key' and go on site and buy one.



- Enter your License Key and click 'Next'.

Your key will be validated and a registration confirmation dialog will be displayed.

Comodo TrustConnect' is now successfully installed in your system. Click Finish to exit the wizard and start using TrustConnect.



## Establish a connection to TrustConnect

Once installation is complete, TrustConnect can be launched in one of the following ways:

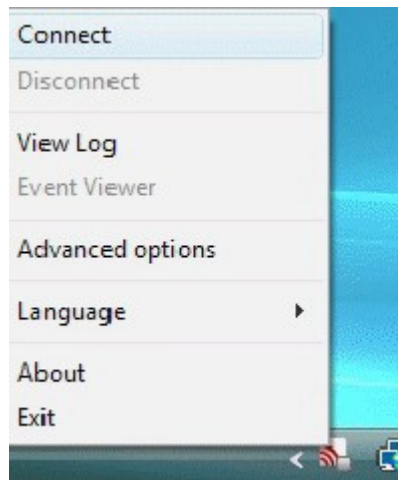
Via the Windows 'Start' menu.

**Click 'Start > Programs > Comodo > Trust Connect > Trust Connect'**

By double clicking the 'TrustConnect' Tray Icon:



By right clicking on the TrustConnect Tray icon and selecting 'Connect':



By default, your TrustConnect client will automatically select the best TrustConnect access server from the servers distributed all over the world depending on your location, distance between you and the servers and their load. You can change the server you want to connect to, through **Advanced Options** explained below. Also TrustConnect is available in multiple languages. You can change the interface language through the **Language** option, explained at the foot of the page.

After starting TrustConnect you should enter your TrustConnect Service Login and Service Password at the client login box.

**Note:** this is not the same password as your Comodo Account password. It is a unique, random password that was generated during account creation to authenticate you to the TrustConnect servers. If required, you can change this password to something more memorable by using the 'Change Service Password' button on the right.

## C·O·M·O·D·O Creating Trust Online™

- TrustConnect
- UserTrust
- Hop Surf
- My Account
- Help
- Contacts
- Logout

Logged in successfully

### Comodo TrustConnect

<b>Service Login</b>	Your_User_Name
<b>Service Password</b>	Your_Password
<b>Date from</b>	2009-01-05 20:11:12
<b>Date to</b>	2010-01-05 20:11:12

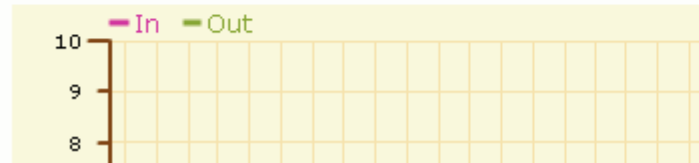
#### Traffic

**Limit:** Unlimited

**Today**

No data found.

#### This month



[Change Service Password](#)

[First Time Users – Click Here \(view in .pdf format\)](#)

[Windows Instructions \(view in .pdf format\)](#)

[Linux Instructions \(view in .pdf format\)](#)

[Mac OS X Instructions](#)

**TrustConnect - User Authentication**

Username:

Password:

Remember

Click 'OK' to confirm and connect. After successful authentication of your user-name and password, the tray icon will turn green to indicate that you are successfully connected to TrustConnect:

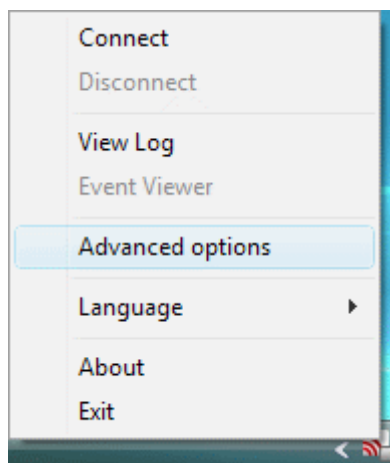


## TrustConnect System Configuration

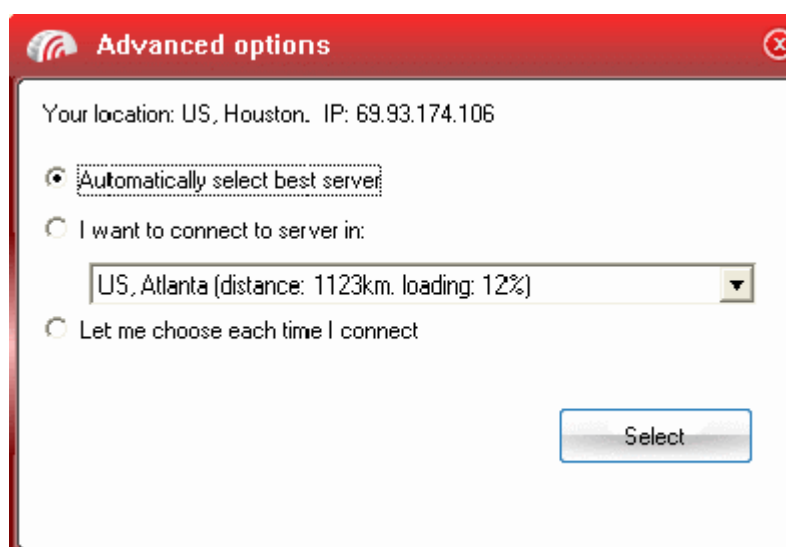
### Advanced Options

Comodo TrustConnect allows you to select the TrustConnect access server you want to connect to, through its advanced options. You can set TrustConnect to automatically select the best server, set a default server or choose to select the server manually every time.

To access the Advanced options panel, right click on the TrustConnect Tray icon and select 'Advanced Options'.



The panel displays your current location with the IP address.



You can configure the server selection from the options:

**Automatically select the best server;**

**I want to connect to server in;**

**Let me choose each time I connect.**

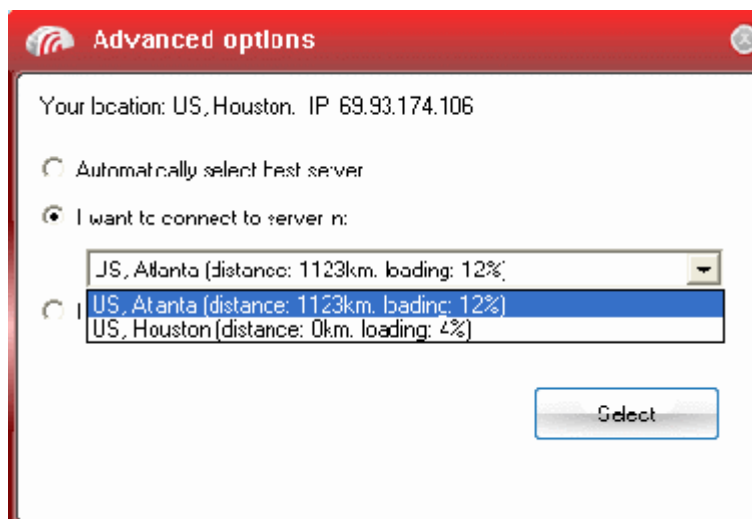
Select the option and click the 'Select' button for your settings to take effect.

### **Automatically select the best server**

Instructs TrustConnect to select the best access server with optimal load and distance to connect to. Your TrustConnect client will automatically find a server nearest to your location and with optimal connection load. This is the default option and is recommended for all users.

### **I want to connect to server in**

Allows you to choose a server and to set it as default, so that every time you start TrustConnect service, you will be connected to the selected server irrespective of your location. The drop-down box displays a list of TrustConnect access servers located at different places, all over the world. Each server is indicated with its location (country, state), distance from your current location and the load of the server in percentage.



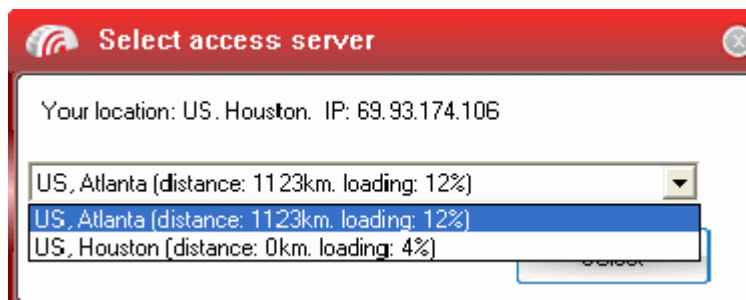
Select the server which you want to set as default and click the 'Select' button.

**Note:** It is always recommended to choose a server nearest to your location for quicker access.

A connection to the selected server will be established every time you connect to TrustConnect . You can change this setting at anytime you want, by accessing the Advanced Options in TrustConnect.

## Let me choose each time I connect

Allows you to select a different server each time you are establishing a connection with TrustConnect. Every time you start TrustConnect service, you will be prompted to select the server which you wish to connect. On establishing a connection to TrustConnect, a 'Select access server' dialog will appear.



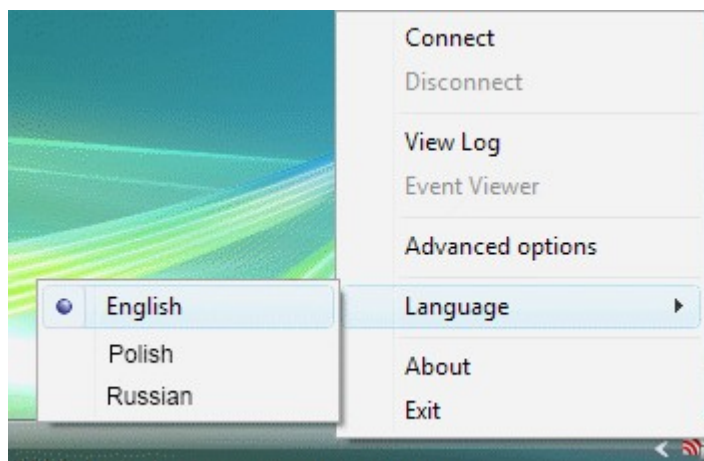
The drop-down box displays a list of TrustConnect access servers located at different places, all over the world. Each server is indicated with its location (country, state), distance from your current location and the load of the server in percentage. Select the server to which you want to connect and click the 'Select' button. A connection with the selected access server will be established.

**Note:** It is always recommended to choose a server nearest to your location for quicker access.

## Language Options

TrustConnect is available in multiple languages. You can change the interface language of the TrustConnect client at any time by right clicking on the system tray icon. To change the interface language:

- Right click on the system tray icon.



- Point the cursor to 'Language' and select the language you want from the list of languages listed beside.

## 2. How To Set Up TrustConnect On Linux

The following options are available for Linux users:

- [Download and Install the OpenVPN Client](#)
- [Download and Install the RedHat Client](#)
- [Download and Install the Ubuntu Client](#)

### Download and Install the TrustConnect OpenVPN Client

To connect to the TrustConnect service you must first download and install the TrustConnect OpenVPN client software:

- Download the TrustConnect OpenVPN client for Linux. Click [here](#) to download the client directly.
- Using the RPM package

If you are using a Linux distribution which supports RPM packages (SuSE, Fedora, Redhat, etc.), it's best to install using this mechanism. You can build your own binary RPM file:

```
rpmbuild -tb openvpn-[version].tar.gz
```

Once you have the RPM file, you can install it with:

```
rpm -ivh openvpn-[details].rpm
```

Installing OpenVPN from a binary RPM package has these dependencies: openssl, lzo, pam. LZO library can be downloaded [here](#).

- Without the RPM package

If you are using Debian, Gentoo, or a non RPM based Linux distribution, use your distribution specific packaging mechanism such as 'apt-get' on Debian or 'emerge' on Gentoo. It is also possible to install OpenVPN on Linux using the universal `.configure` method.

First expand the `.tar.gz` file:

```
tar -xzf openvpn-[version].tar.gz
```

Then cd to the top level directory and type:

```
./configure  
  
make  
  
make install
```

For more details, visit the official [OpenVPN 2.0 'How To' page](#).

## Configuring TrustConnect OpenVPN Client

- Download the correct client configuration file for your TrustConnect package:

TrustConnect subscribers download:

<https://accounts.comodo.com/download/trustconnect/client.conf>

- Download the TrustConnect **CA certificate**.

Copy root **CA certificate** and **configuration file** into OpenVPN configuration directory, for example into /etc/openvpn/.

- Start TrustConnect OpenVPN client program:  

```
openvpn--openvpn config /etc/openvpn/client.conf
```
- Enter your TrustConnect **login** and **password**.

## Download and Install the TrustConnect RedHat Client

To install TrustConnect client for RedHat (Fedora, RHEL) system:

- Download RPM package here: <https://accounts.comodo.com/download/trustconnect/tcclient-1.0-1.noarch.rpm>
- Start console, login as root and execute command:

```
# rpm -Uvh PATH/TO/RPM/tcclient-1.0-1.noarch.rpm
```

Client was tested on the RedHat Fedora 8, 9, 10.

## Download and Install the TrustConnect Ubuntu Client

To install TrustConnect client for Ubuntu system:

- Download DEB package here: [https://accounts.comodo.com/download/trustconnect/tcclient\\_1.0-1\\_all.deb](https://accounts.comodo.com/download/trustconnect/tcclient_1.0-1_all.deb)
- Start console, login as root and execute command:

```
# dpkg -i PATH/TO/DEB/tcclient_1.0-1_all.deb
```

Client was tested on the Ubuntu 8.0, 8.1.

**Usage:** Run trustconnect client: "Applications Menu" -> "Internet" -> "TrustConnect Client".



## 3. How To Set Up TrustConnect On MAC OS

- Download the TrustConnect OpenVPN client for Mac OS X 10.4 (or above) from the Tunnelblick project site - <http://code.google.com/p/tunnelblick>. The client can be download from the 'Featured downloads' section on the right hand side of the homepage. Alternatively, it can be downloaded directly by clicking the following link: [http://tunnelblick.googlecode.com/files/Tunnelblick\\_3.0b26.dmg](http://tunnelblick.googlecode.com/files/Tunnelblick_3.0b26.dmg).
- Install the client. Double click the .dmg file you downloaded in the step above to start the installation process. Once setup is complete, a 'Tunnelblick' icon should appear on your desktop. More details about the Tunnelblick application and its usage is available at the project website located at <http://code.google.com/p/tunnelblick>
- Download the correct client configuration file for your TrustConnect package:
  - TrustConnect subscribers download: <https://accounts.comodo.com/download/trustconnect/client.conf>
- Rename the file you just downloaded from either 'client.conf' to 'openvpn.conf'. Download the TrustConnect CA certificate.
- Copy the renamed **configuration** file and the root **CA certificate** into the following directory: *~/Library/Application Support/Tunnelblick/Configurations* .
- Start **Tunnelblick.app** and choose **Connect 'openvpn'**.
- Enter your TrustConnect **login** and **password**.

## 4. How To Set Up TrustConnect On iPhone, iPad, iPod Touch

- Open VPN account information page. Go to **Setting > General > Network > VPN > Settings**.
- Select PPTP and enter TrustConnect VPN account information:
  - In the 'Server' field, please use one of the following addresses:  
  
us1.vpn.comodo.com  
  
us2.vpn.comodo.com  
  
uk1.vpn.comodo.com  
  
uk2.vpn.comodo.com
- Enter your TrustConnect account and password.

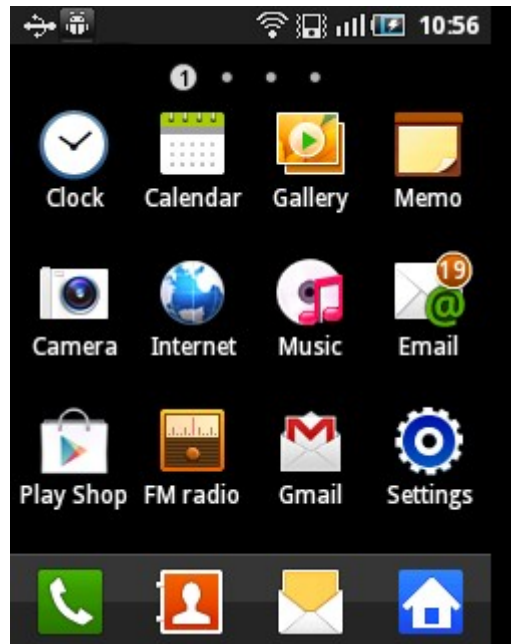


- Click the 'Save' button and go back to VPN main page (**Setting > General > Network > VPN**).
- Start Trust Connect VPN connection. Switch **VPN** to **ON**.



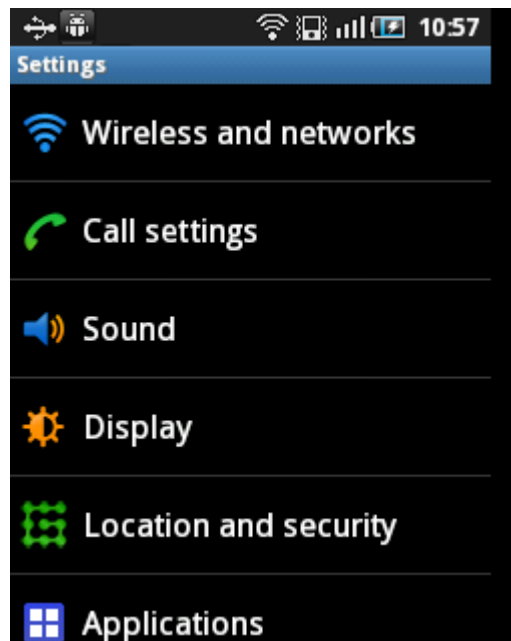
## 5. How To Set Up TrustConnect On Android Devices

1. Tap 'Menu' in the home screen of your Android device.



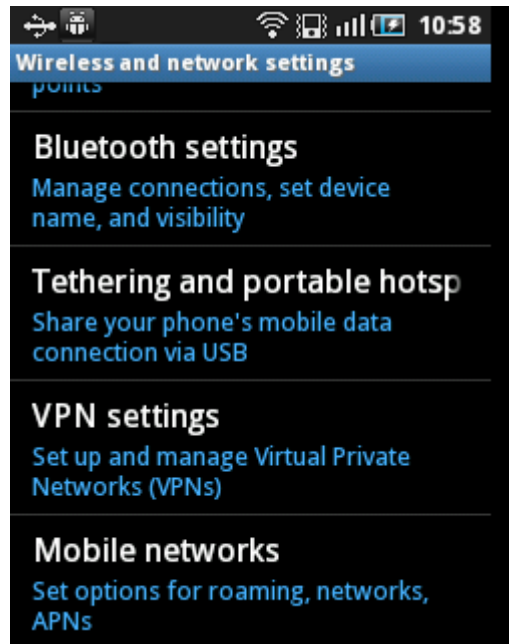
2. Tap 'Settings' in the menu screen.

The settings interface will be displayed. The settings menu screen might look different depending on the Android device you are using. However, the 'Wireless and networks' screen should be fairly common for most of the Android devices.



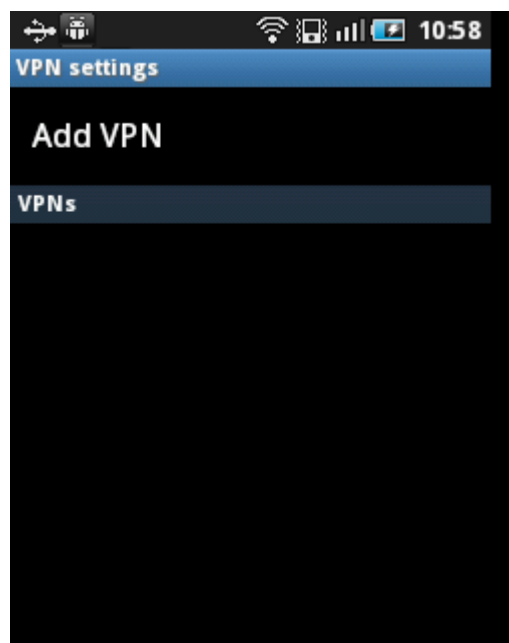
3. Tap 'Wireless and networks' in the Settings interface.

The 'Wireless and network settings' screen will be displayed.



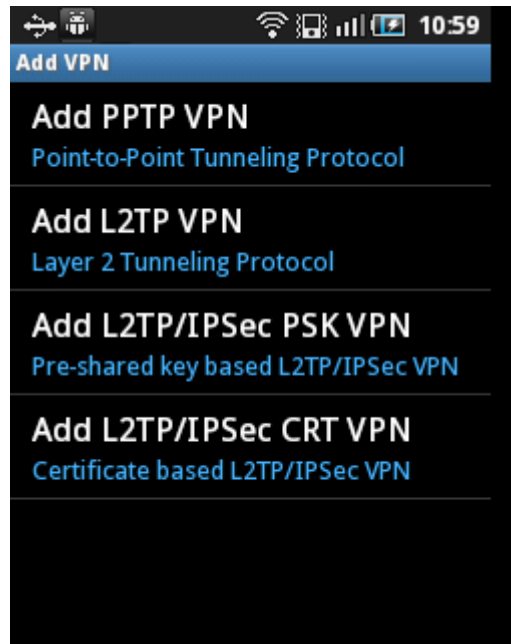
4. Tap 'VPN settings' in the screen.

The VPN settings screen will be displayed.



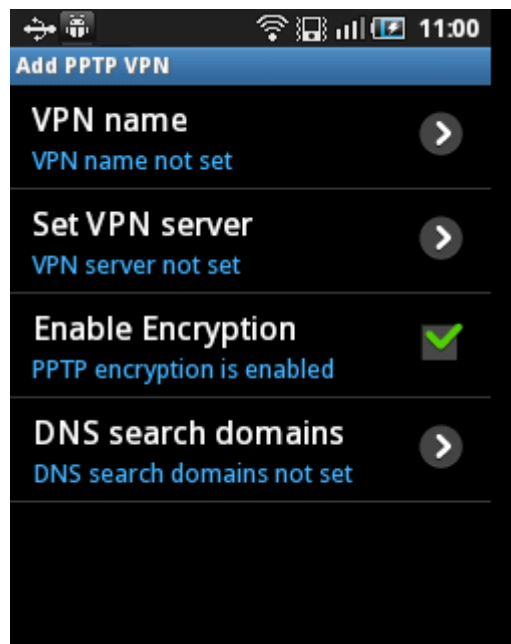
5. Tap 'Add VPN' in the screen.

The 'Add VPN' screen will be displayed.

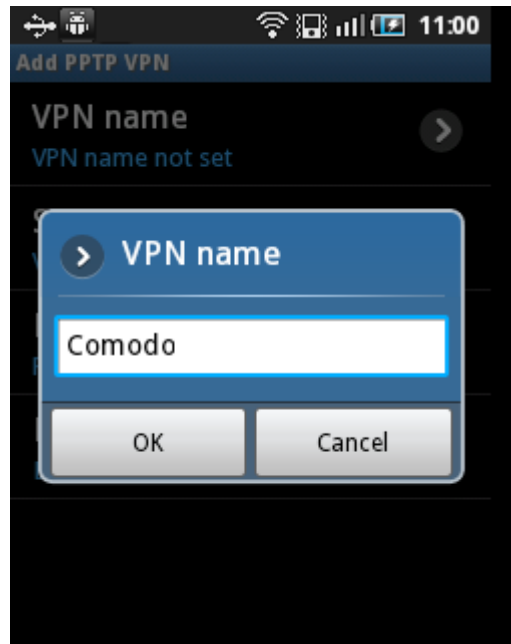


6. Tap 'Add PPTP VPN' the screen.

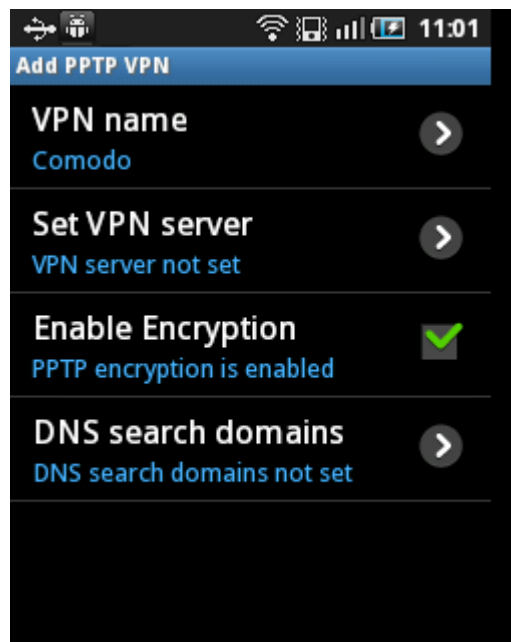
The 'Add PPTP VPN' screen will be displayed.



7. Tap 'VPN name' and enter a name for the VPN and tap 'OK'.

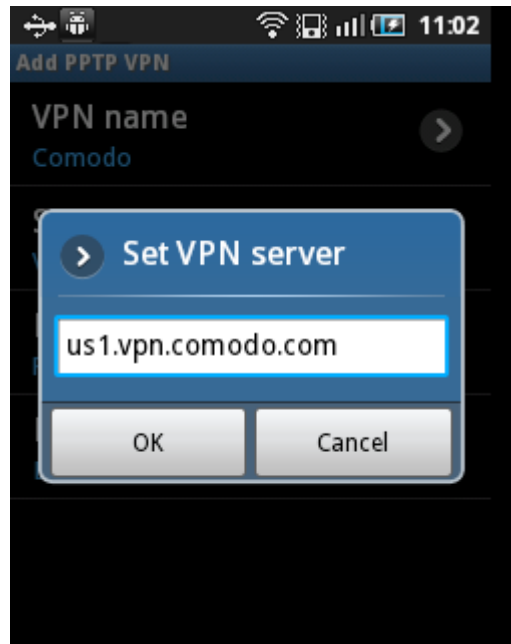


8. Tap 'Set VPN server' in the screen...

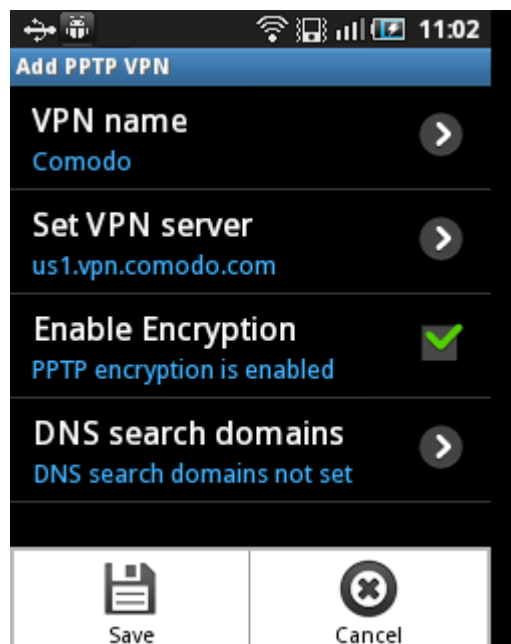


...and enter one of the following addresses in the server field and tap 'OK'.

- us1.vpn.comodo.com
- us2.vpn.comodo.com
- uk1.vpn.comodo.com
- uk2.vpn.comodo.com

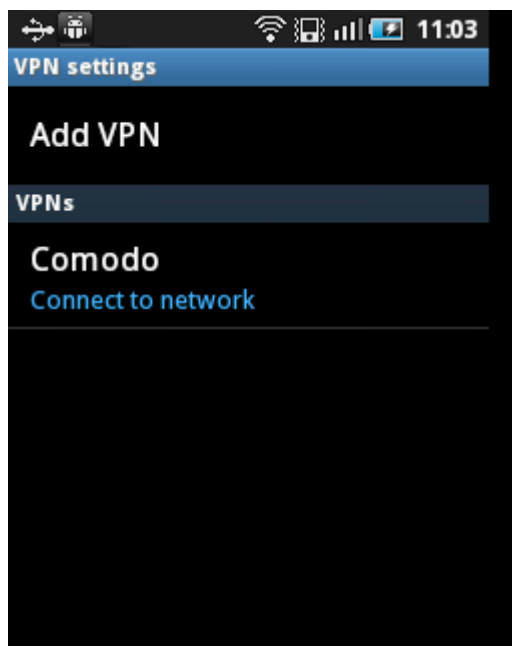


9. Press options key and tap Save.



The VPN will be added and displayed in the VPN settings screen.





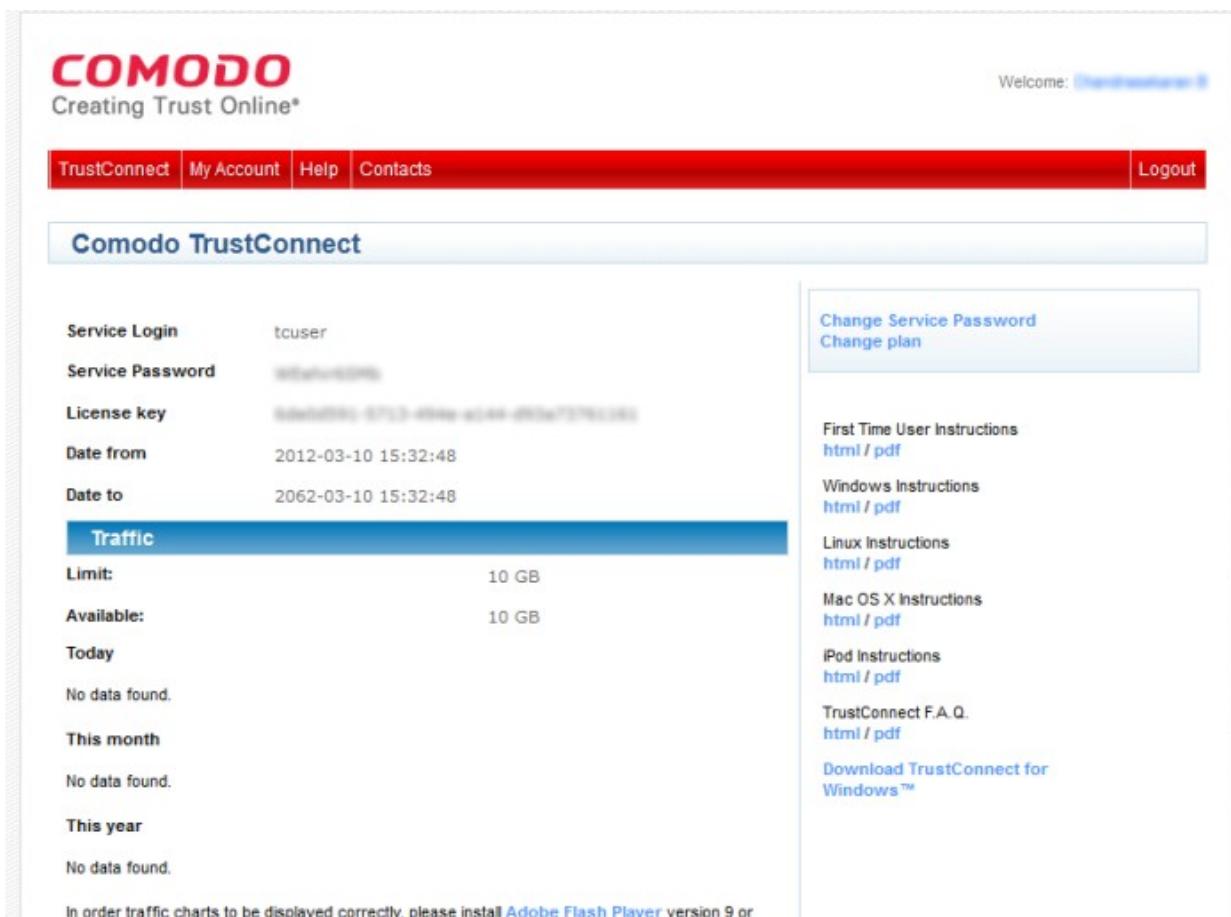
- To connect, tap on the VPN name.



- Enter your TrustConnect username and password.

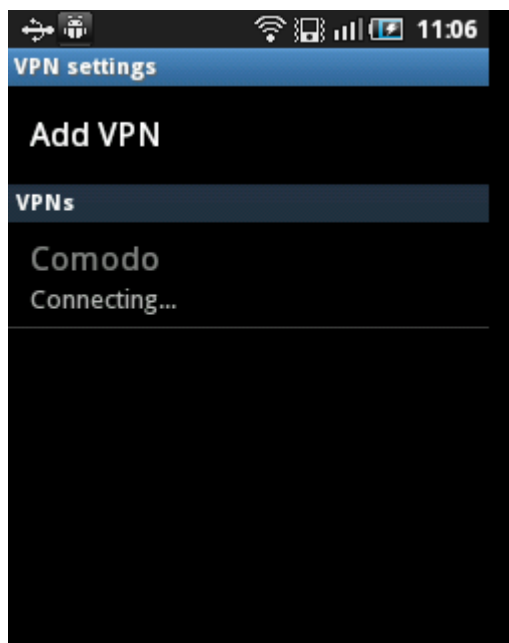
**TIP:** Select the 'Remember user name' checkbox and you need not enter the login credentials from next time onwards.

You need to enter TrustConnect service password here (Not the CAM password). To know your service password, login to your CAM Account at <https://accounts.comodo.com/account/login> and click TrustConnect in the menu bar.

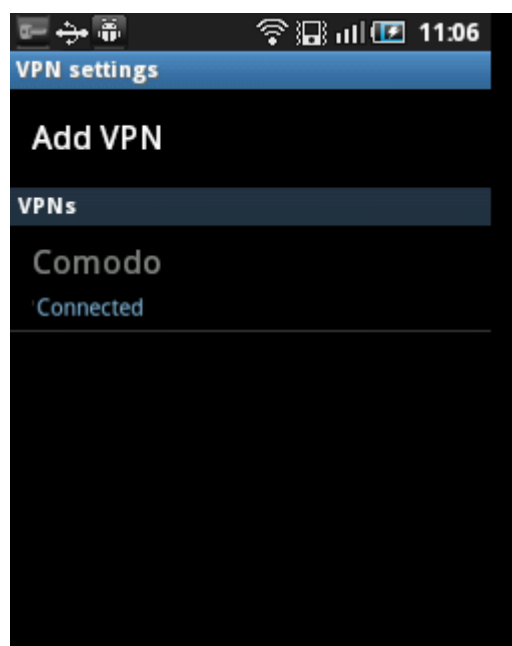


The name, service password and license key details are blurred intentionally in the screenshot above and will be clearly visible when you login to your CAM account.

The connection progress will be displayed...



...and after authenticating the login credentials, your Android device will be connected.



A key icon will be displayed in the notifications area once a successful connection is made.

## 6. How to Set Up TrustConnect On Windows Mobile Devices

1. Tap 'Start' in the notifications bar.



2. Tap 'Settings' in the screen.



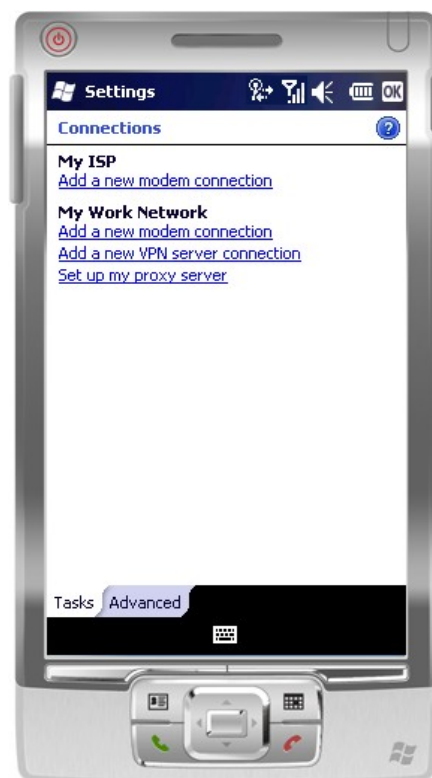
3. In the 'Settings' screen, tap 'Connections'.



4. In the 'Connections' screen, tap 'Connections' again.



5. In the 'Connections Settings' screen, tap the 'Add a new VPN server connection' link.



6. In the 'Make New Connections' screen, enter the relevant details:

**Name:** Enter any name in the box.

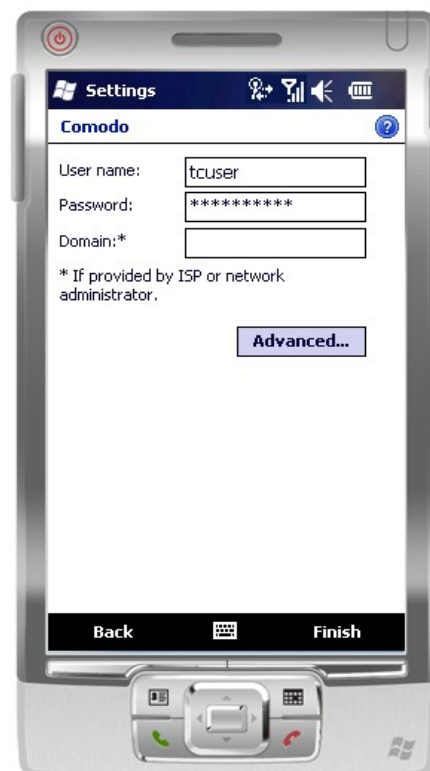
**Host name/IP:** Enter any of the following addresses:

- us1.vpn.comodo.com
- us2.vpn.comodo.com
- uk1.vpn.comodo.com
- uk2.vpn.comodo.com

**VPN type:** Select 'PPTP'.



7. Tap 'Next'.



8. Enter your TrustConnect user name and password.

You need to enter TrustConnect service password here (Not the CAM password). To know your service password, login to your CAM Account at <https://accounts.comodo.com/account/login> and click TrustConnect in the menu bar.

The screenshot displays the Comodo TrustConnect user interface. At the top left is the Comodo logo with the tagline "Creating Trust Online®". On the top right, it says "Welcome: [User Name]". Below this is a red navigation bar with links for "TrustConnect", "My Account", "Help", "Contacts", and "Logout". The main content area is titled "Comodo TrustConnect" and contains several sections:

- Account Details:** A table with the following information:

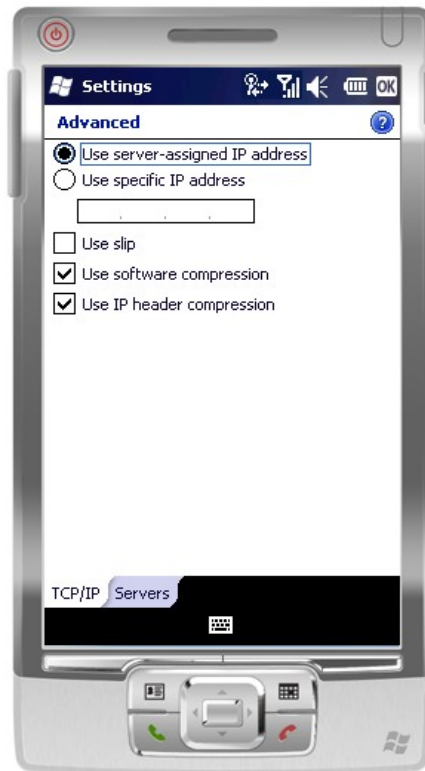
Service Login	tcuser
Service Password	[blurred]
License key	[blurred]
Date from	2012-03-10 15:32:48
Date to	2062-03-10 15:32:48
- Traffic Usage:** A section with a blue header "Traffic" and a table showing usage limits and availability:

Limit:	10 GB
Available:	10 GB
Today	No data found.
This month	No data found.
This year	No data found.
- Help and Support:** A list of links for "Change Service Password", "Change plan", "First Time User Instructions", "Windows Instructions", "Linux Instructions", "Mac OS X Instructions", "iPod Instructions", "TrustConnect F.A.Q.", and "Download TrustConnect for Windows™".

At the bottom of the page, a note states: "In order traffic charts to be displayed correctly, please install [Adobe Flash Player](#) version 9 or higher."

The name, service password and license key details are blurred intentionally in the screenshot above and will be clearly visible when you login to your CAM account.

9. Tap 'Advanced' and retain the default settings in the 'TCP/IP' tab as shown below.



10. Tap the 'Servers' tab and retain the default settings (all the fields should be blank and 'Use server-assigned addresses' selected) as shown below.



11. Tap 'OK' in the notifications area and tap 'Finish'.

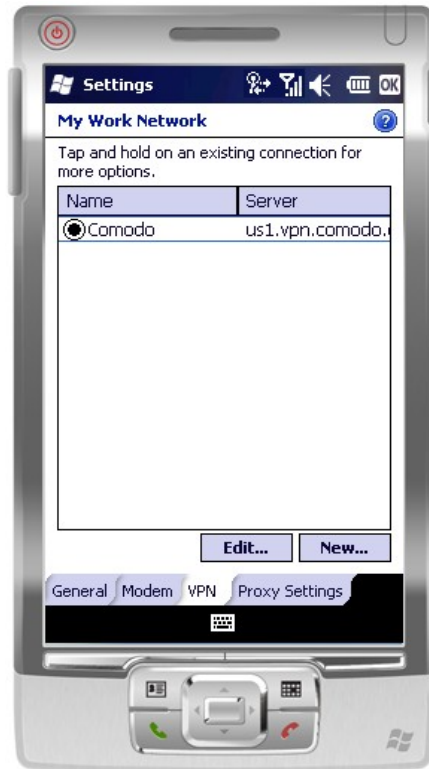




12. Tap 'Edit my VPN servers' link.



13. Tap and hold the newly configured connection.



14. Tap 'Connect' in the drop-down.



The connection progress will be displayed...



...and on successful connection, the details will be displayed.



That's it. Now your Windows mobile device is connected to Comodo TrustConnect.

# Comodo TrustConnect - FAQ

## Common Questions

### Microsoft Windows Questions

### Microsoft Windows Vista Questions

### Ipod/ iPhone / iPad Client Questions

## Common Questions

1. **How do I set up TrustConnect and Log on to the TrustConnect Server?**
2. **My User Name and Password don't work - why not?**
3. **What Operating Systems does TrustConnect support?**
4. **What clients should I use to connect to the TrustConnect Server?**
5. **All our Internet (HTTP & HTTPS) connections are via a proxy server. How do I connect using TrustConnect in this situation?**
6. **Why do I need a Secure Connection like Comodo TrustConnect?**
7. **What is a Sniffer?**
8. **Do I have to use a wireless connection to use Comodo TrustConnect?**
9. **I have a Wi-Fi at home with WEP turned on. Am I safe?**
10. **Is the TrustConnect license for only one computer, or can I install it on others in my home network?**
11. **What is the typical connection speed through TrustConnect?**
12. **How do I cancel my account?**
13. **What security measures does TrustConnect use?**
14. **Can TrustConnect work on a PC behind a NAT-enabled router?**

## Microsoft Windows Questions

1. **What is the "TAP-Win32 Adapter" that appears in my "Network Connections"?**
2. **I'm sure I've done everything correctly but I still cannot connect to the server.**
3. **I can connect to the server, but cannot get access to any site. IPCONFIG /ALL shows IP 0.0.0.0 for the TAP adapter. What's wrong?**
4. **Do I need my Firewall up while connecting to the WEB via TrustConnect?**
5. **What port numbers are used by TrustConnect?**

## Microsoft Windows Vista Questions

1. **I cannot connect to the server. Log file contains the entry "All TAP-Win32 adapters on this system are currently in use." But I cannot find any adapters in my "Network Connections". What is the problem?**
2. **All adapters are located in correct place, but I still cannot connect to the server.**

## Ipod/ iPhone / iPad Client Questions

1. **The server did not respond when I try to connect.**
2. **What are the TrustConnect server addresses?**
3. **What port numbers are used by TrustConnect for iPod clients?**

## Common Questions

### 1. How do I set up TrustConnect and Log on to the TrustConnect Server?

- Firstly, log into your Comodo Account at <https://accounts.comodo.com/> with the user name and password that you created during the TrustConnect or CIS Pro enrollment process.
- Click the 'TrustConnect' tab on the top navigation bar.
- Download, install and configure the appropriate TrustConnect client software for your operating system. All necessary software and instructions are available on the right hand side of the 'TrustConnect' area of your account. Alternatively, please use the following links:

#### Windows

##### How to set up TrustConnect on Windows

#### MAC OS X

##### How to set up TrustConnect on MAC OS

#### Linux / OpenVPN

##### How to set up TrustConnect on Linux

#### iPhone / iPod Touch / iPad

##### How to set up TrustConnect on iPhone, iPad, iPod Touch

### 2. My User Name and Password don't work - why not?

Make sure that you are entering the TrustConnect Service login details and NOT your Comodo Account Manager *login details*.

As a TrustConnect customer (or CIS Pro customer which includes TrustConnect service) you have two sets of login details:

- Your Comodo Account Login Details. This user name and password enables you to log into your account at <https://accounts.comodo.com/> to view and configure account details. You created this on the sign - up form when you enrolled for TrustConnect or CIS Pro.
- Your TrustConnect Service Login Details. This user-name and password is used to connect to the TrustConnect server and should be entered at the client login box.

To view your TrustConnect Service Login details:

- Login at <https://accounts.comodo.com/> with your Comodo Account Login Details
- Click the 'TrustConnect' button on the top navigation
- Your service login and password are listed. You can change this password at any time by clicking the 'Change Service Password' button.

### 3. What operating systems does TrustConnect support?

TrustConnect is successfully tested on Windows 2000, Windows XP, Windows Vista, Linux and Mac Os X. It supports mobile devices like iPod/iPhone as well.

## 4. What clients should I use to connect to TrustConnect Server?

To start using TrustConnect you must first download and install the appropriate TrustConnect client software for your operating system. Client software for supported operating systems is available for download in the TrustConnect area of your account. Alternatively, use the following links:

### Windows

[How to set up TrustConnect on Windows](#)

### MAC OS X

[How to set up TrustConnect on MAC OS](#)

### Linux / OpenVPN

[How to set up TrustConnect on Linux](#)


### iPhone / iPod Touch / iPad

[How to set up TrustConnect on iPhone, iPad, iPod Touch](#)

## 5. All our Internet (HTTP & HTTPS) connections are via a proxy server. How do I connect using TrustConnect in this situation?

If you use the Windows client, you should:

- Change the TrustConnect target (command) line:
  - right click on 'TrustConnect' icon;
  - select 'Properties' -> 'Shortcut';
  - add the following text - allow\_proxy 1 into the 'Target' field, so it will look like written below:  
"C:\Program Files\Comodo\TrustConnect\bin\TrustConnect.exe" --allow\_proxy 1



Target: `stConnect\bin\TrustConnect.exe" --allow_proxy 1`

- Start TrustConnect client
- Set your proxy settings:
  - right click on 'TrustConnect' tray icon and select 'Proxy Settings';
  - select 'Manual Configuration' and enter your proxy settings, for example:  
HTTP proxy, Address: 192.168.0.1, Port: 3128
- Connect to TrustConnect

If you use the Linux/Unix or MAC OS X client, you need only add the http-proxy directive to the client configuration file. For example: http-proxy 192.168.0.1 312.

If you use iPhone/iPod client: Set your proxy settings on the VPN settings: 'Setting' -> 'General' -> 'Network' -> 'VPN' -> 'Settings' -> 'Proxy'

Set your proxy settings on the VPN settings: 'Setting' -> 'General' -> 'Network' -> 'VPN' -> 'Settings' -> 'Proxy'

## 6. Why do I need a Secure Connection like Comodo TrustConnect?

If you are logging onto the Internet using Wi-Fi public hotspots, then all of your information is in a readable, plain text format that cyber criminals can sniff. In addition, many hotels have sniffable wired networks. When you're traveling, all of your information can be seen, including confidential company and personal information.

## 7. What is a Sniffer?

Typically, a computer will only receive traffic aimed at its TCP/IP address. Sniffer software allows a computer to record traffic headed to (and from) every computer on the local network.

## 8. Do I have to use a wireless connection to use Comodo TrustConnect?

Not at all. Some networks, even if they are physically hard-wired and not wireless, do not have secure connections. You can use Comodo TrustConnect even from a wired connection if you need to encrypt your session or hide your destination. If you'd like another layer of protection, Comodo TrustConnect can provide it.

## 9. I have a Wi-Fi at home with WEP turned on. Am I safe?

No. Cyber criminals can break WEP encryption with easy-to-acquire tools that are available on the Internet. Computers without firewalls are even more vulnerable to attack. Comodo TrustConnect will help make your connection secure even on your home-based Wi-Fi connection.

## 10. Is the TrustConnect License for only one computer, or can I install it on others in my home?

You may install TrustConnect client software on any amount of PCs you wish, but you are allowed to connect to TrustConnect service with one of them at a time. For example, you may install TrustConnect on work PC and on your own laptop and connect to TrustConnect from work computer or from laptop, but not simultaneously. The license agreement can be read here: <https://accounts.comodo.com/trustconnect/management/eula>.

## 11. What is the typical connection speed through TrustConnect?

All TrustConnect connections are made over 128 bit SSL encrypted connections so typical speeds are between 1.5 - 3.0 Mbps.

## 12. How do I cancel my account?

If you would like to cancel your TrustConnect account at any time, please send your request to [subscriptions@comodo.com](mailto:subscriptions@comodo.com). Please remember to include your account user-name (login), email address and order number and a brief reason for cancellation.

## 13. What security measures does TrustConnect use?

All connections to TrustConnect are over 128-bit SSL encryption. Additionally, a private VPN session key is re-created every hour.

## 14. Can TrustConnect work on a pc behind a nat-enabled router?

Yes. If your computer is connected to the Internet through a NAT-enabled router, you shouldn't have any problems connecting to the TrustConnect service.

## Microsoft Windows Questions

### 1. What is the "TAP-Win32 Adapter" that appears in my "Network Connections"?

The "TAP-Win32 Adapter" is virtual network card that is created by the TrustConnect client during installation. This adapter is required in order to establish a secure tunnel to the TrustConnect Server.

### 2. I'm sure I have done everything correctly but I still cannot connect to the server.

Make sure that you have been correctly entering your Service Login/Password. If it is incorrect you should visit <https://accounts.comodo.com/trustconnect/management> and check your Service Login.

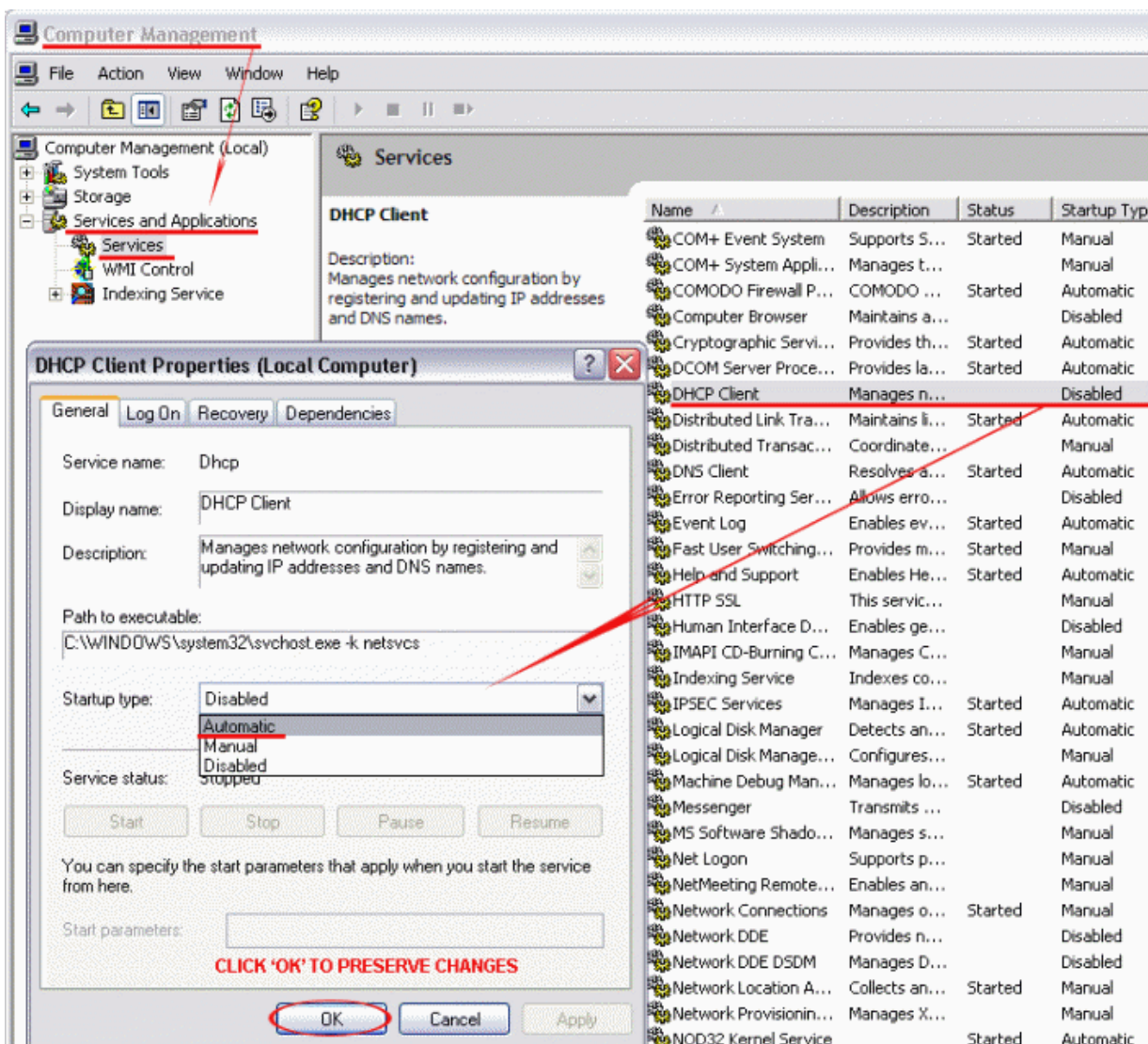
### 3. I can connect to the server, but cannot get access to any site. IPCONFIG /ALL shows IP 0.0.0.0 for the TAP adapter. What's wrong?

DHCP Client service MUST be enabled.

To enable this service, you need to take the following steps:

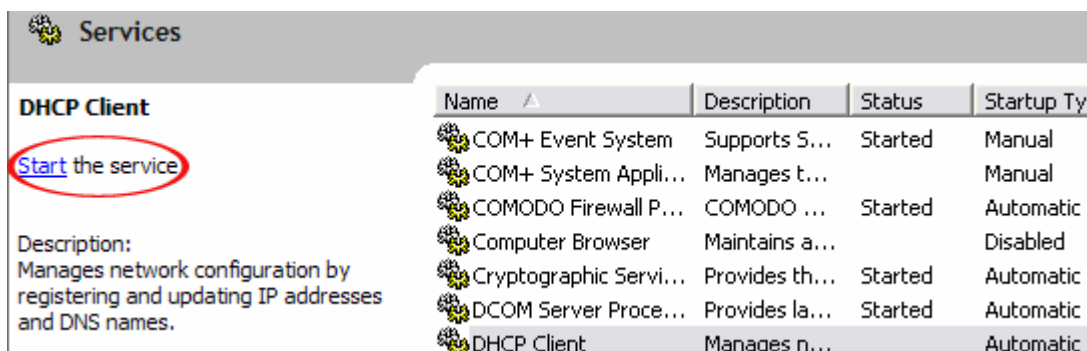
- Right click on the Windows 'My Computer' icon.
- Select "Manage" from the context sensitive menu to open the Windows 'Computer Management' utility.
- Select 'Services and Applications' then 'Services'.
- Double-click 'DHCP Client' from the list of services that are listed in the right hand pane. This will open the DHCP Client Properties dialog.
- Make sure 'Start Up Type' is set to 'Automatic'.





- Click 'OK' to confirm and save your changes.

Now 'Start the service' link is available. Click on it to run DHCP Client.



## 4. Do I need my Firewall up while connecting to the WEB via TrustConnect?

Yes. TrustConnect ensures secure wireless connectivity to the Internet but does not secure all your computers ports (it is not designed for this purpose). You still need an effective firewall to protect your ports when surfing the 'net. Comodo recommends users install Comodo Internet Security which contains an award winning packet filtering personal firewall and is completely free for home and business users.

## 5. What port numbers are used by TrustConnect?

TrustConnect uses only 443 port.

### Microsoft Windows Vista Questions

#### 1. I cannot connect to the server. The log file contains the entry "All TAP-Win32 adapters on this system are currently in use." - but I cannot find any adapters in my "Network Connections". What is the problem?

Always install and run TrustConnect under Administrator access rights.

#### 2. All adapters are located in correct place, but I still cannot connect to the server.

You will need to check the box against 'Run this program as an administrator':

Right click on TrustConnect icon;

Select 'Properties' -> 'Compatibility'.

OR

run the application under the Windows Vista "Run As Admin" option.

### Ipod/ iPhone / iPad Client Questions

#### 1. The server did not respond then I try to connect.

Check your network settings and access to Internet.

#### 2. What are the TrustConnect server addresses?

You may use the following addresses when configuring the IPod / iPhone client:

- us1.vpn.comodo.com
- us2.vpn.comodo.com
- uk1.vpn.comodo.com
- uk2.vpn.comodo.com

#### 3. What port numbers are used by TrustConnect for iPod / iPhone / iPad clients?

TrustConnect for iPod / iPhone / iPad clients uses 1723 port (PPTP service).

# About Comodo

The Comodo companies are leading global providers of Security, Identity and Trust Assurance services on the Internet. Comodo CA offers a comprehensive array of PKI Digital Certificates and Management Services, Identity and Content Authentication (Two-Factor - Multi-Factor) software, and Network Vulnerability Scanning and PCI compliance solutions. In addition, with over 10,000,000 installations of its threat prevention products, Comodo Security Solutions maintains an extensive suite of endpoint security software and services for businesses and consumers.

Continual innovation, a core competence in PKI and a commitment to reversing the growth of Internet-crime distinguish the Comodo companies as vital players in the Internet's ongoing development. Comodo, with offices in the US, UK, China, India, Romania and the Ukraine, secures and authenticates the online transactions and communications for over 200,000 business customers and millions of consumers, providing the intelligent security, authentication and assurance services necessary for trust in on-line transactions.

## **Comodo Security Solutions, Inc.**

1255 Broad Street

Clifton, NJ 07013

United States

Tel: +1.877.712.1309

Tel: +1.703.637.9361

Email: [EnterpriseSolutions@Comodo.com](mailto:EnterpriseSolutions@Comodo.com)

For additional information on Comodo - visit <http://www.comodo.com>.